

Assessment Methods

Table A List and Description of Direct Assessment Methods			
S.No	Direct Assessment Method	Description	Frequency
1	Internal Assessment Examination	The internal assessment marks for a theory subject shall be based on three internal tests shall be the internal assessment marks for the relevant theory subject. Internal assessment is done through descriptive questions.	Three times per Semester for R2017 & Two times for R2021
2	Lab Internal Assessment Test	The internal assessment marks for a laboratory shall be based on record & model exam marks obtained.	End of every semester
3	Project Viva Voce Internal Assessment Test	The internal assessment marks in the case of project in the final year shall be based on evaluation three reviews by a committee comprising of head of the department, senior faculty members and project guide.	VIII semester
4	Semester Examination - Theory External Assessment Test	Theory examination is focused on attainment of course outcomes through descriptive exams for the respective theory subjects.	End of every semester
5	Semester Examination- Laboratory External Assessment Test	Practical examination focuses on conduction of experiments and viva-voce for attaining their respective course outcomes.	End of every semester
6	Project (External Assessment)	The external assessment marks in the case of project viva voce in the final year shall be based on evaluation of presentation and project report by a committee comprising of internal and external examiner.	VIII semester
7	Course Exit Survey	Course exit survey assesses opinions or thoughts about the knowledge acquired by the students in respective theory & practical courses.	End of each course

Table B List and Description of Indirect Assessment Methods

S.No	Indirect Assessment Method	Description	Frequency
1	Program Exit Survey	The program exit survey identifies broad learning outcomes related to graduate education and asks graduates to indicate the level of reparation provided by their graduate program.	End of VIII semester
2	Alumni Survey	Alumni Survey gathers alumni view points towards quality of instructions received, with all the areas of their education- from academic experiences to student experiences (Campus life, extra-curricular activities) for continuous improvement.	After graduation
3	Employer survey	Employer survey is indicative of the graduate's overall expertise in information science & engineering, his/her communication skills, personal attributes and interpersonal skills.	After employment

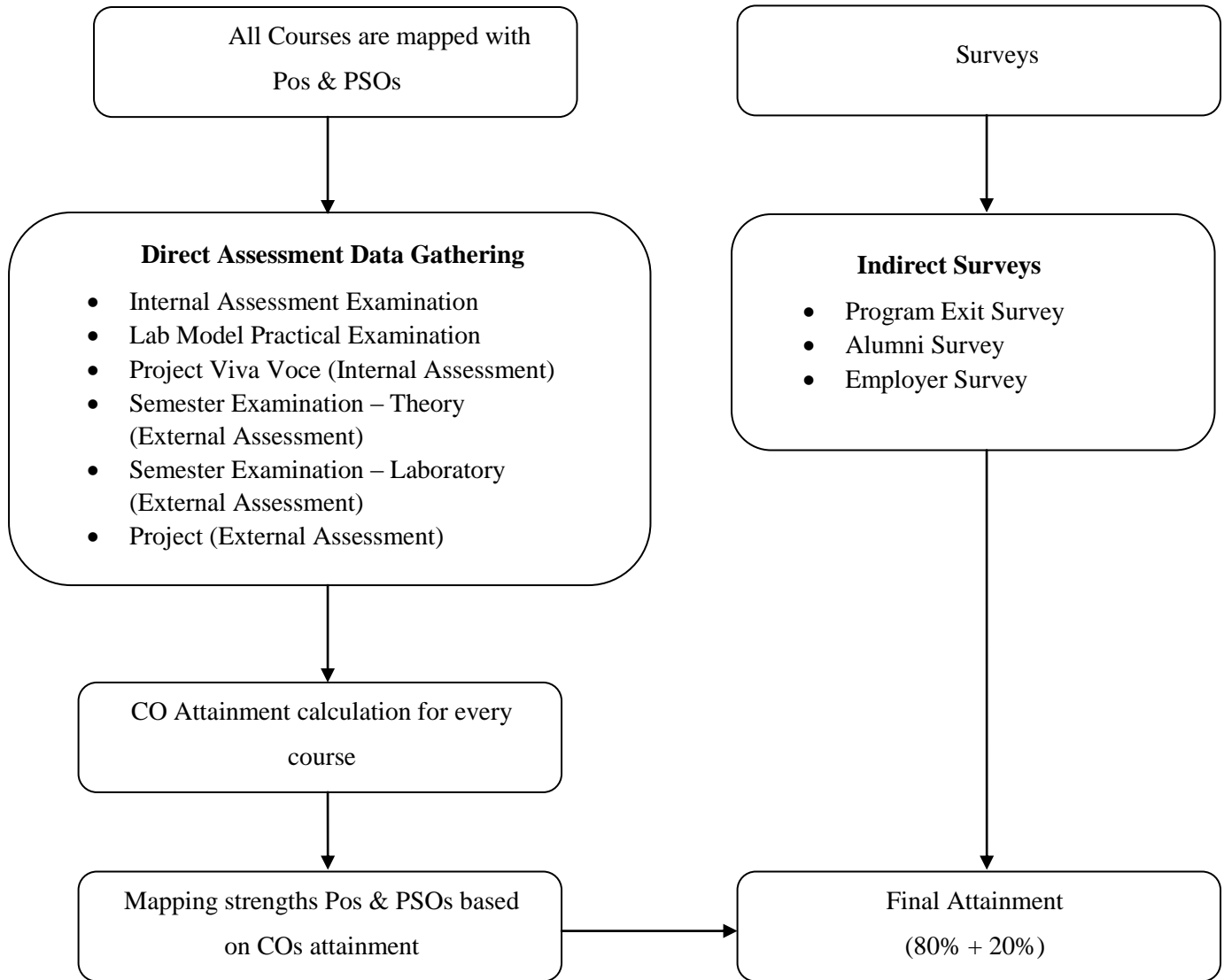


Figure. A Processes used for measuring the attainment of each Program Outcomes and Program Specific Outcomes