

Assessment Methods

Table A List and Description of Direct Assessment Methods			
S.No	Direct Assessment Method	Description	Frequency
1	Internal Assessment Examination	The internal assessment marks for a theory subject shall be based on three internal tests shall be the internal assessment marks for the relevant theory subject. Internal assessment is done through descriptive questions.	Three times per Semester for R2017 & Two times for R2021
2	Lab Internal Assessment Test	The internal assessment marks for a laboratory shall be based on record & model exam marks obtained.	End of every semester
3	Project Viva Voce Internal Assessment Test	The internal assessment marks in the case of project in the final year shall be based on evaluation three reviews by a committee comprising of head of the department, senior faculty members and project guide.	VIII semester
4	Semester Examination - Theory External Assessment Test	Theory examination is focused on attainment of course outcomes through descriptive exams for the respective theory subjects.	End of every semester
5	Semester Examination- Laboratory External Assessment Test	Practical examination focuses on conduction of experiments and viva-voce for attaining their respective course outcomes.	End of every semester
6	Project (External Assessment)	The external assessment marks in the case of project viva voce in the final year shall be based on evaluation of presentation and project report by a committee comprising of internal and external examiner.	VIII semester
7	Course Exit Survey	Course exit survey assesses opinions or thoughts about the knowledge acquired by the students in respective theory & practical courses.	End of each course

Table B List and Description of Indirect Assessment Methods

S.No	Indirect Assessment Method	Description	Frequency
1	Program Exit Survey	The program exit survey identifies broad learning outcomes related to graduate education and asks graduates to indicate the level of reparation provided by their graduate program.	End of VIII semester
2	Alumni Survey	Alumni Survey gathers alumni view points towards quality of instructions received, with all the areas of their education- from academic experiences to student experiences (Campus life, extra-curricular activities) for continuous improvement.	After graduation
3	Employer survey	Employer survey is indicative of the graduate's overall expertise in information science & engineering, his/her communication skills, personal attributes and interpersonal skills.	After employment

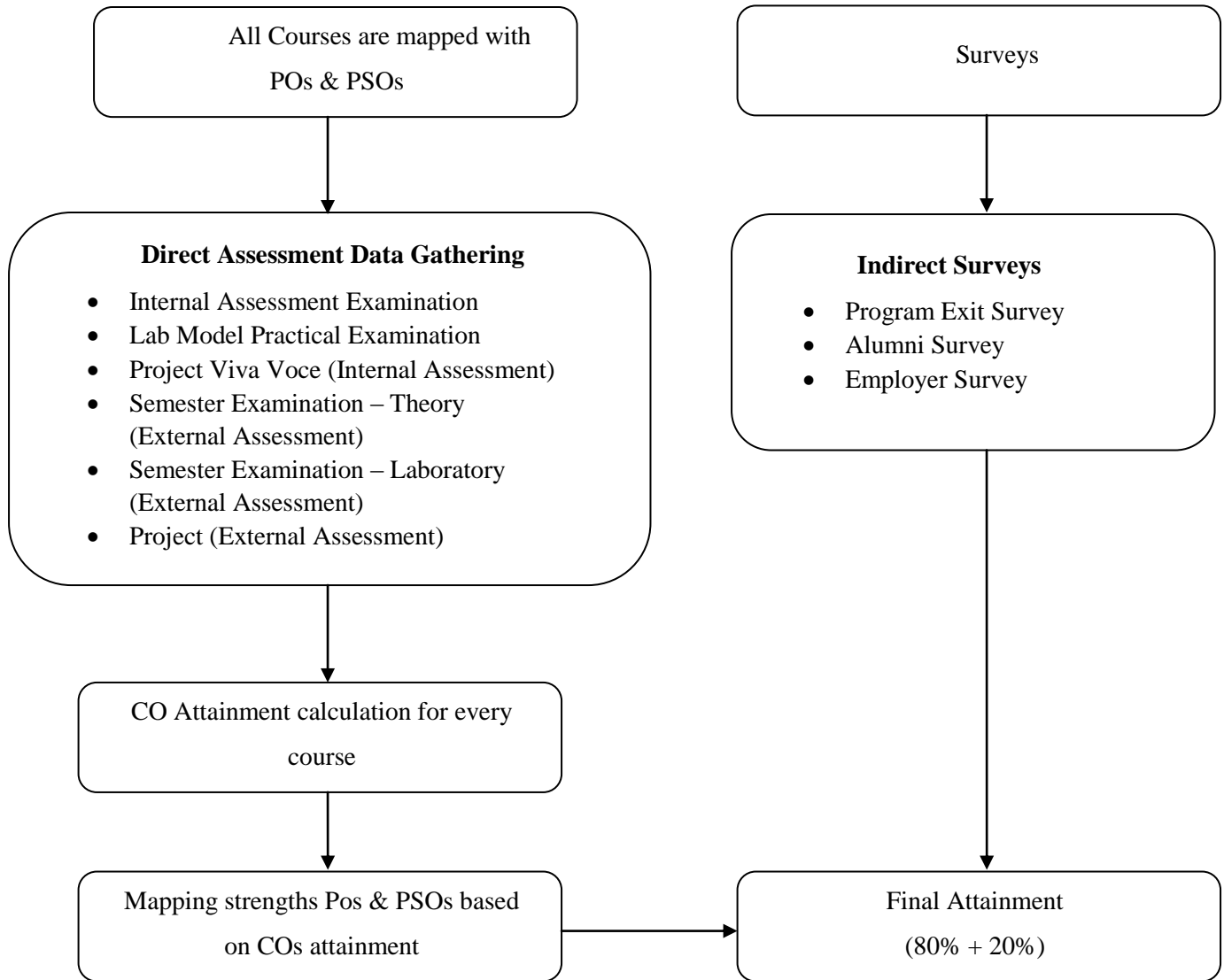


Figure. A Processes used for measuring the attainment of each Program Outcomes and Program Specific Outcomes

Course Outcomes Attainment Calculations

Table A. Ratio of Internal and End Semester Mark Split up for various Courses

S.No.	Regulation	Category of Course	Internal Mark %	University Semester Exam Marks %	Total Marks
1	R2017	Theory course	20	80	100
2		Laboratory courses /Project work	20	80	100
1	R2021	Theory course	40	60	100
2		Laboratory courses /Project work	60	40	100

Internal Assessment Process for Theory Courses

Table B Internal Assessment Process for Theory Courses

S.No	Components for IAP	Syllabus Coverage for the test	Duration of the test in Hrs.	Marks (Max)
R2017				
1	Internal Assessment Examinations I	First 1.5 Units	1 hr 30 min	50 Marks (Converted to 20)
2	Internal Assessment Examinations II	1.5 – 3 Units	1 hr 30 min	
3	Internal Assessment Examinations III	4-5 Units	1 hr 30 min	
4	University Examination	All 5 Units	3 hrs	100 (Converted to 80)
Total				100

R2021				
1	Internal Assessment Examinations I (60) Assignment I/ Seminar I (40)	First 2.5 units	3 hrs	100 Marks (Converted to 40)
		2.5 – 5 units	3 hrs	
2	Internal Assessment Examinations I (60) Assignment I/ Seminar I (40)	2.5 – 5 units	3 hrs	
3	University Examination	All 5 Units	3 hrs	100 (Converted to 60)
Total				100

Internal Assessment Process for Laboratory Courses

Table C Internal Assessment Process for Laboratory Courses

S.No	Components for IAM	Marks (max.)	Attainment Calculation
R2017			
1	Record	75	Record & Model Mark Converted to 20 Marks
2	Model Exam	25	
3	University Practical Exam	100	University Practical Exam converted to 80 Marks
Total			100
R2021			
1	Record	75	Record & Model Mark Converted to 60 Marks
2	Model Exam	25	
3	University Practical Exam	100	Converted to 40 Marks
Total			100

Internal Assessment Process for Project Work

Table D Internal Assessment Process for Project work

S.No	Components for IAM	Marks (max.)	Attainment Calculation
1	Project Review	100	3 Review marks (5+7.5+7.5) Converted to 20 marks
2	University Viva-Voce	100	Converted to 80 marks
Total			100