



# NANDHA COLLEGE OF TECHNOLOGY, ERODE

ACADEMIC YEAR 2020-21

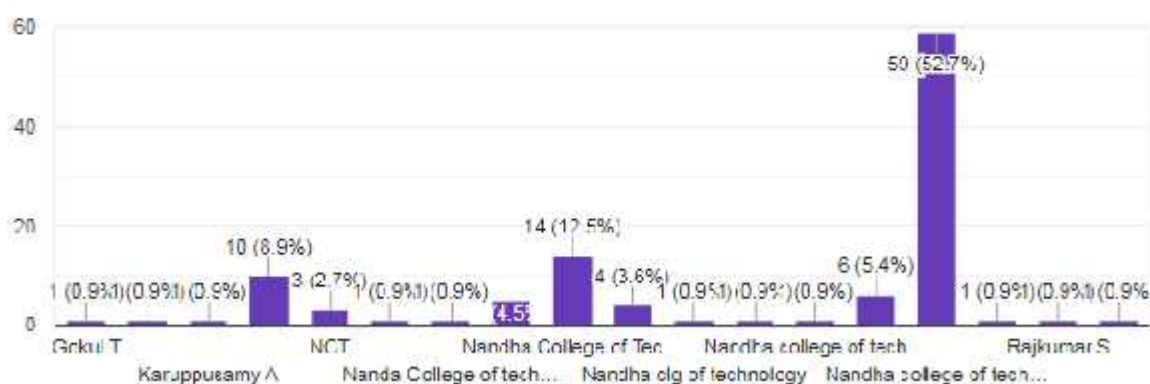
## STUDENTS SATISFACTION SURVEY

### 2.7.1 Online student satisfaction survey regarding teaching learning process

College Name:

[Copy](#)

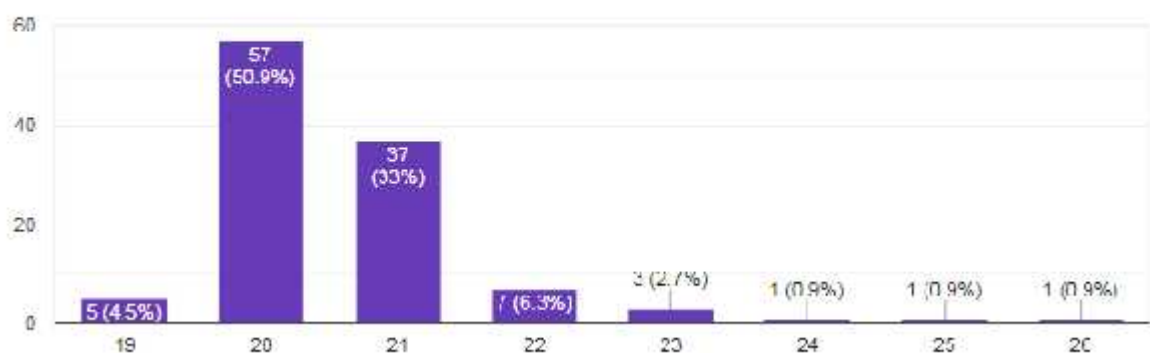
112 responses



Age:

[Copy](#)

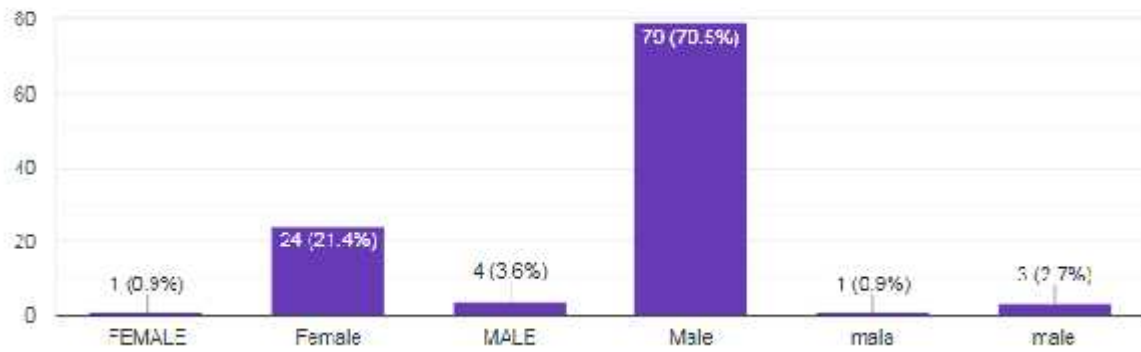
112 responses



Gender:

 Copy

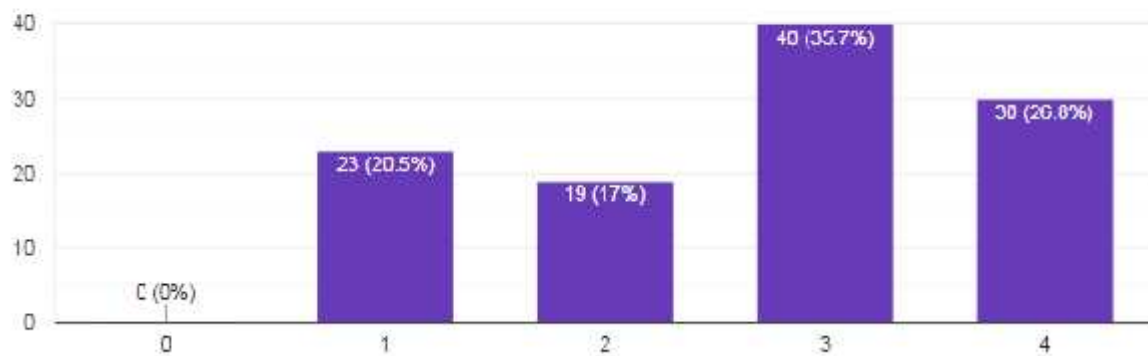
112 responses



1. How much the syllabus was covered in the class?

 Copy

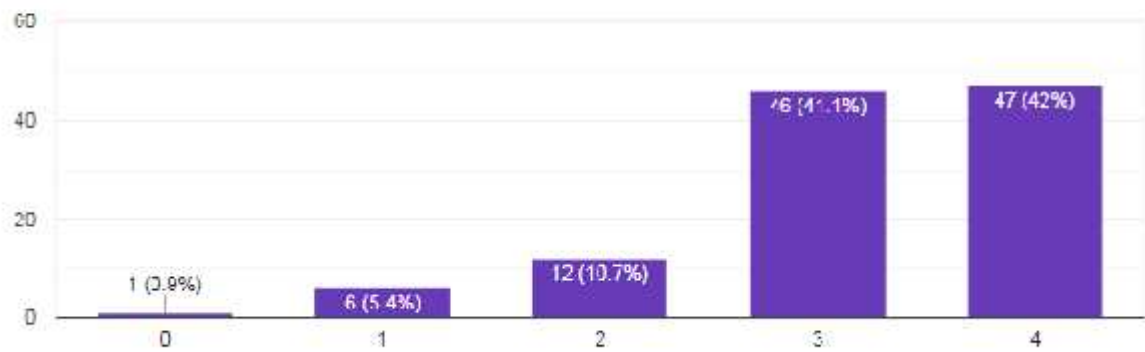
112 responses



2. How well did the teachers prepare for the class?

 Copy

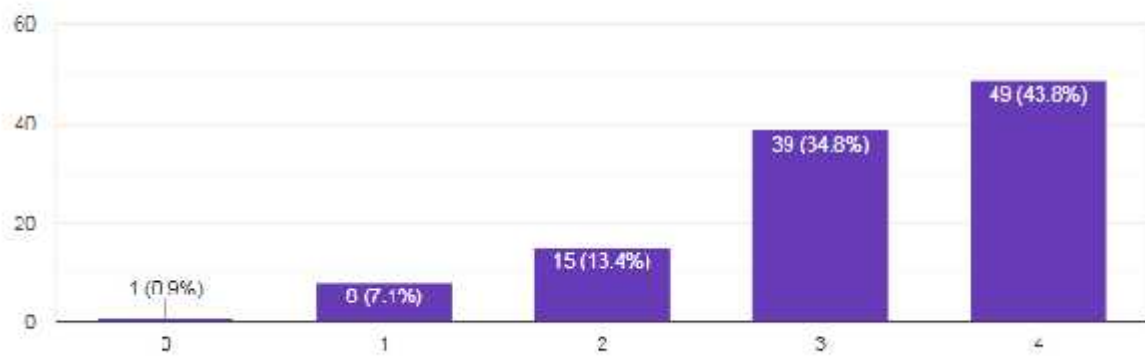
112 responses



3. How well the teachers were communicating?

 Copy

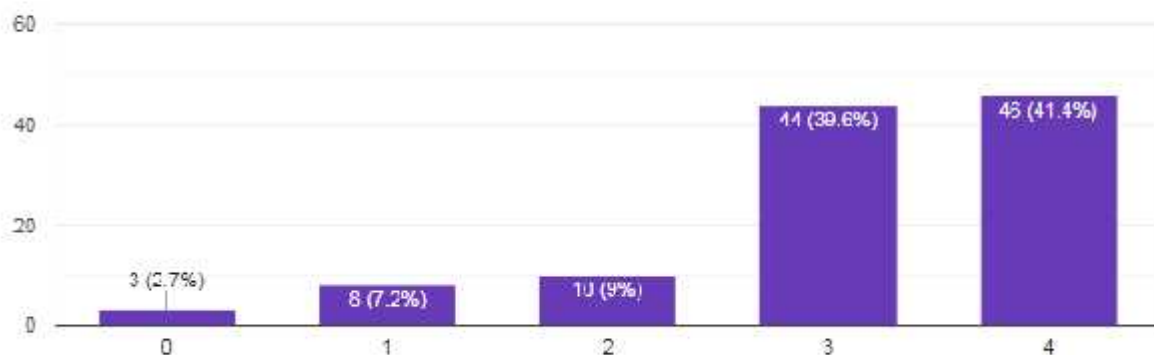
112 responses



4. The teachers approach to the teaching can best be described as:

 Copy

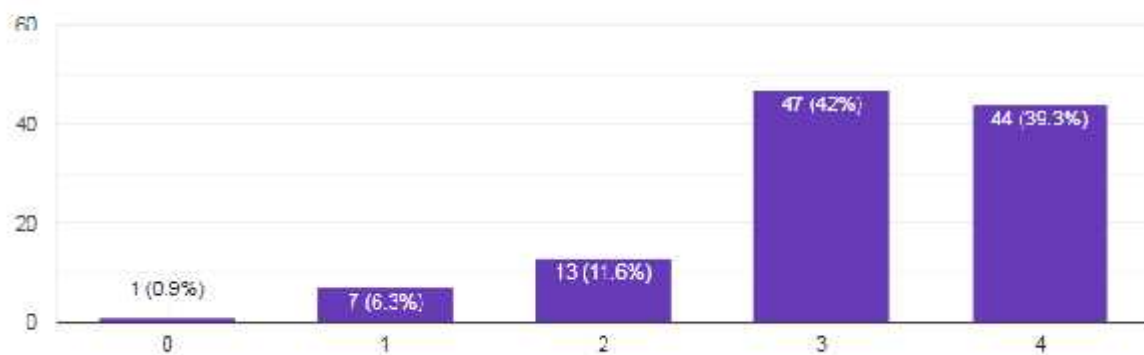
111 responses



5. Fairness of the internal evaluation process of the teacher

 Copy

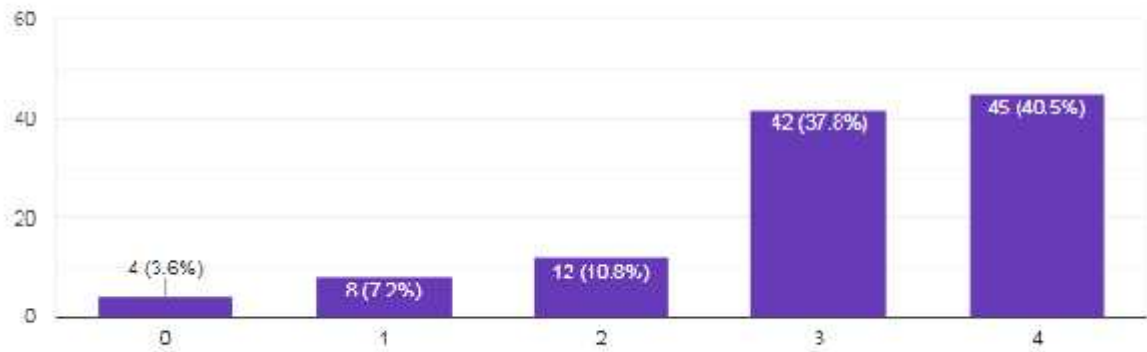
112 responses



6. Was your performance in the assessment discussed with you?

 Copy

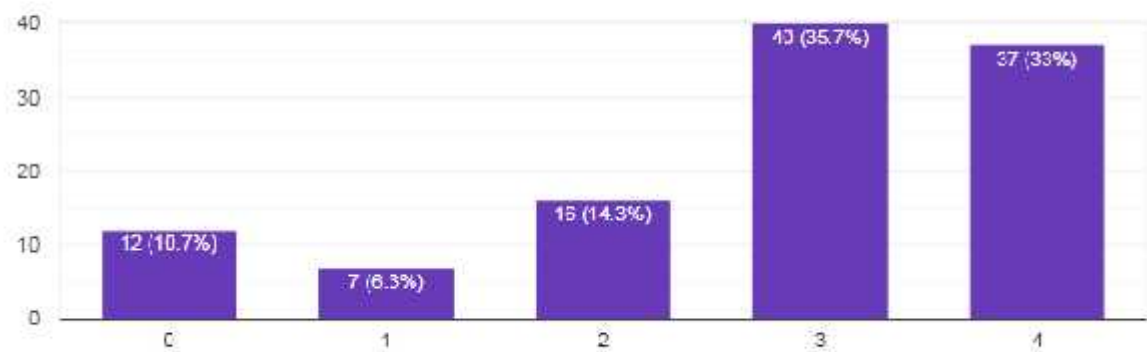
111 responses



7. The institute takes an active in promoting internship, field visit opportunities for the students.

 Copy

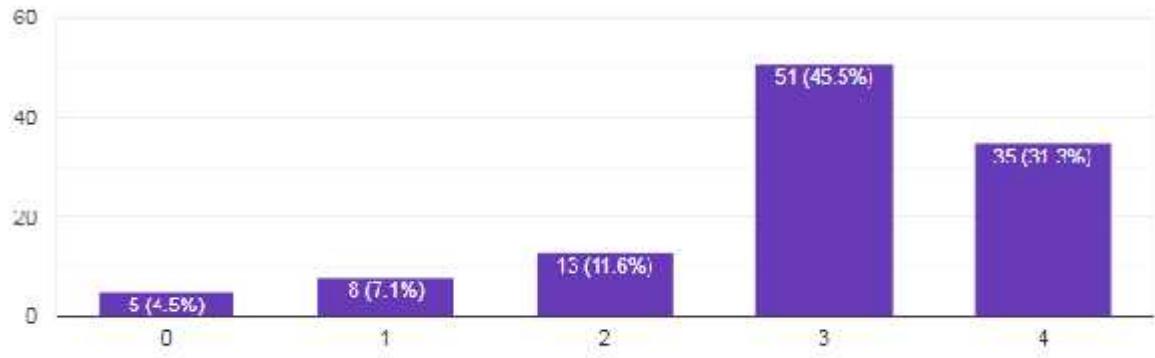
112 responses



8. Teaching and mentoring proves in your institution facilities you in cognitive, social and emotional growth.

 Copy

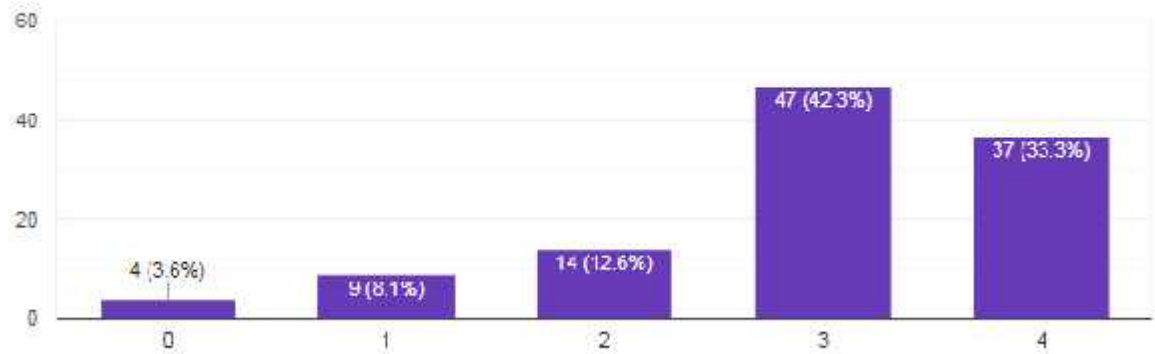
112 responses



9. The institution provides multiple opportunities in learn and grow.

 Copy

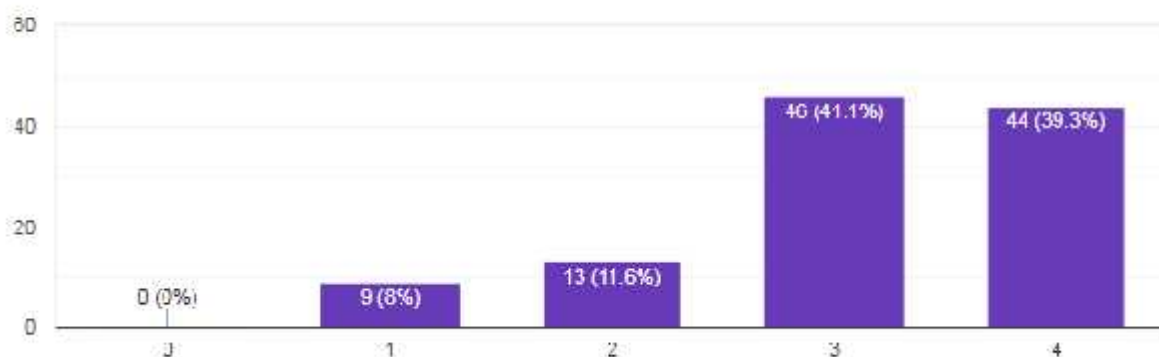
111 responses



10. The teachers inform you about your course and program outcomes.

 Copy

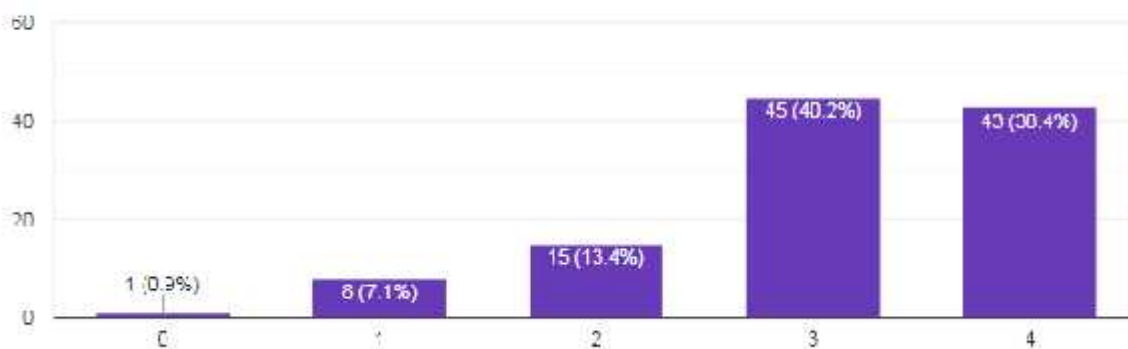
112 responses



11. Your mentor does a necessary follow-up with an assigned task to you.

 Copy

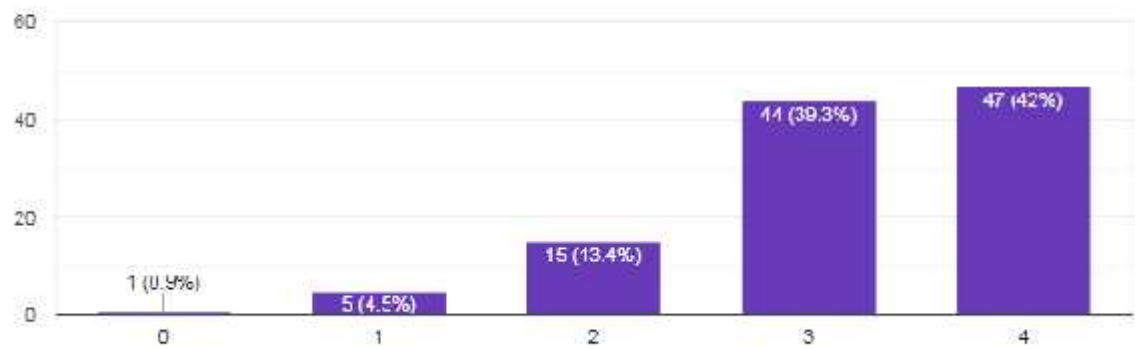
112 responses



12. Teacher illustrates the concept through the example and applications

 Copy

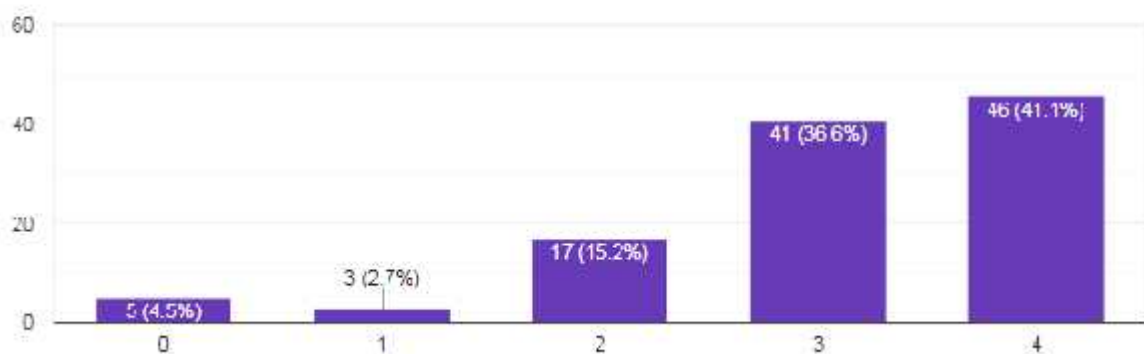
112 responses



13. The teacher identify your strength and encourage you with providing the right level of challenges


 Copy

112 responses

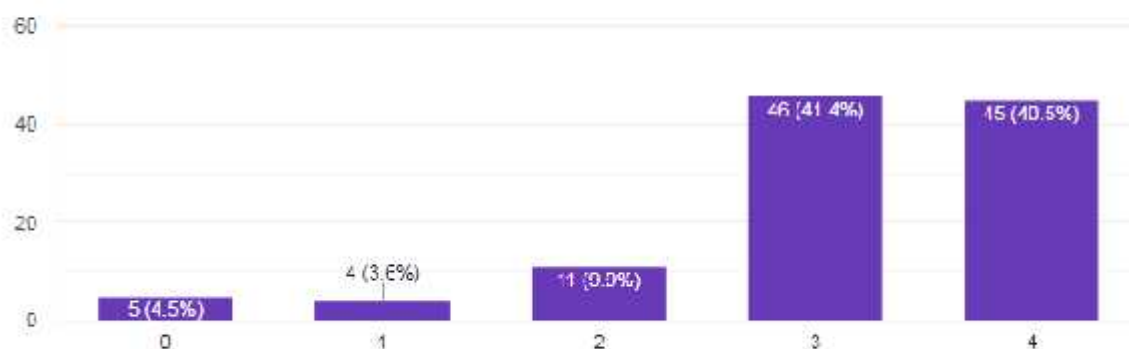




14. The teacher identifies your strength and helps you to overcome them.

 Copy

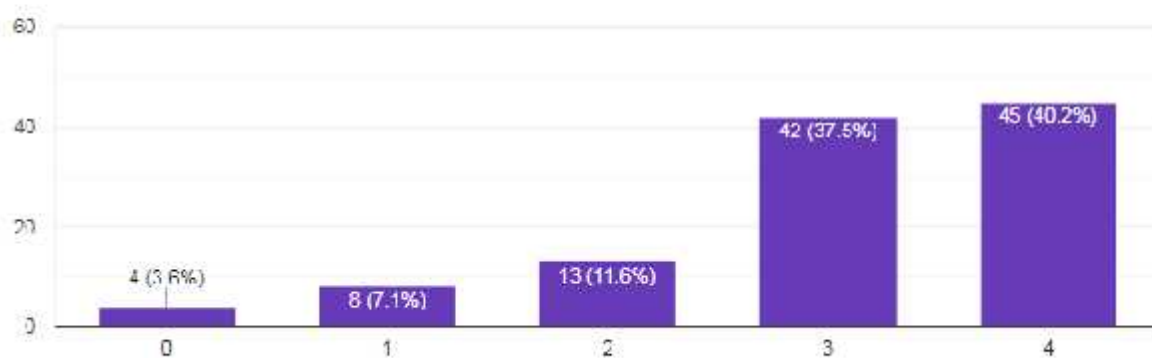
111 responses




15. The institution makes an effort to engage students in the monitoring, review and continuous quality improvement of the teaching learning process.

 Copy

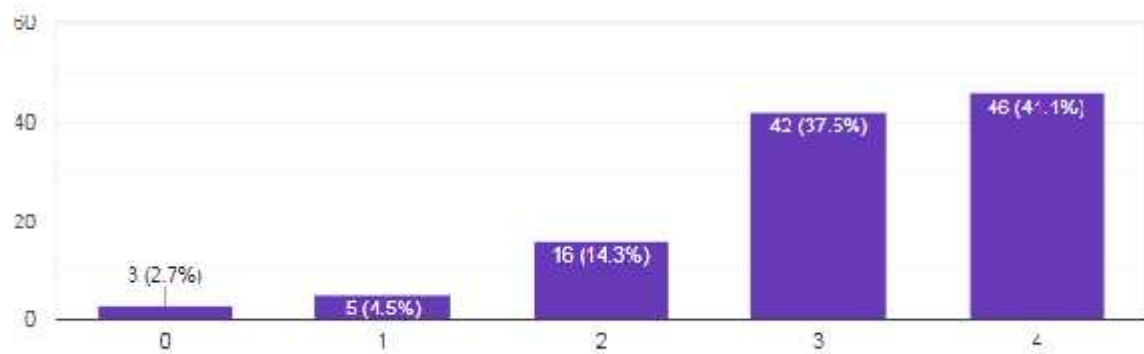
112 responses



16. Teachers encourage you to participate in the extracurricular activities.

 Copy

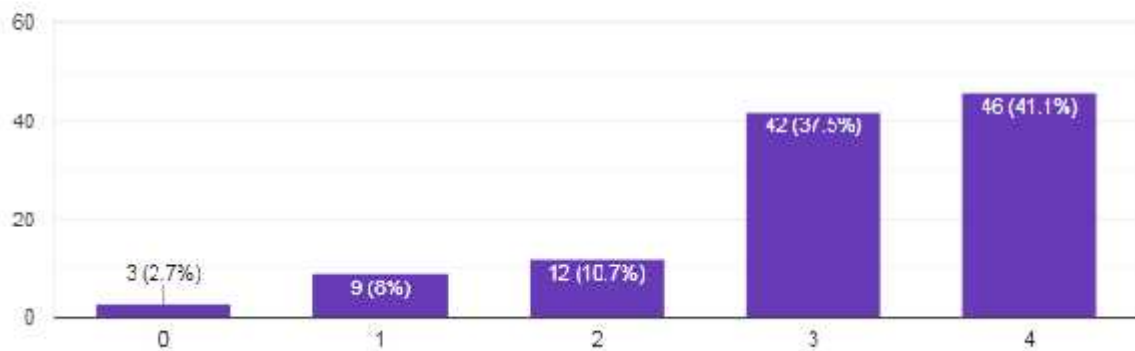
112 responses



17. The efforts are made by the institute or teacher to inculcate soft skills, life skills and employability skills to make you ready for the world of work.

 Copy

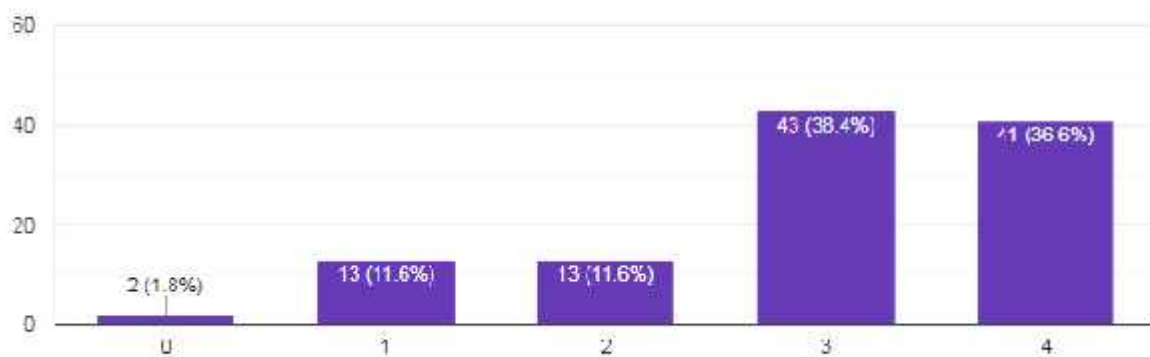
112 responses



18. What percentage of teachers uses ICT tools such as LCD Projectors, Multimedia tools etc. while teaching.

 Copy

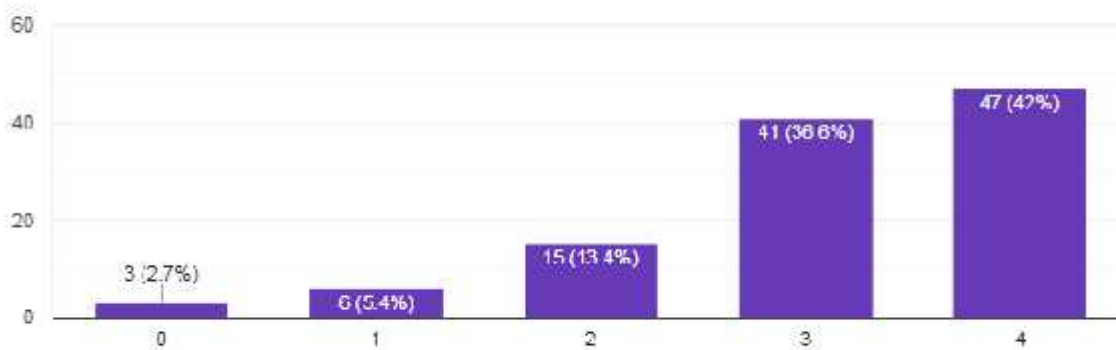
112 responses



19. The overall quality of the teaching – learning process in your institution is?

 Copy

112 responses



20. Are the teachers covering the syllabus as per the university norms?

 Copy

12 responses

